

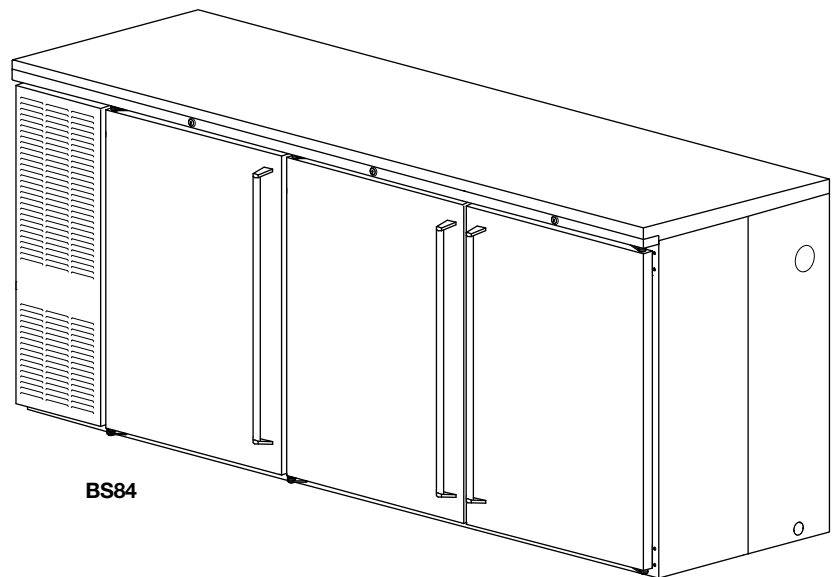
CUSTOM SELF-CONTAINED CABINETS

Perlick Features

- Available in 2, 3 or 4 door models.
- Front vented compressor.
- Self-closing field reversible doors with locks.
- Approved for ANSI/NSF #7 open food.
- Quiet-running, high efficiency compressor.
- Two inch foamed-in-place insulation provides greater energy efficiency and structural strength.
- Two inch thermal breaks and mullion heaters combine to resist condensation build up around the door openings.
- Low-E glass doors improve insulation and resist condensation on the glass.
- Compact fluorescent light above each door fully illuminates interior.
- Heavy-duty, reinforced base will not bend or sag.
- Heavy-duty polyethylene door sill.
- Stainless steel exterior.
- Heavy-duty stainless steel hinges.
- Epoxy coated evaporator coil.
- Optional draft beer dispensing system available with a variety of dispensing head styles.
- Vinyl coated shelves.
- Stainless steel top included.
- Multiple door finish options.
- Condensing unit installed left or right end.

MODEL NOS.

- ☐ BS60
☐ BS84
☐ BS108



BS84



8300 West Good Hope Road • Milwaukee, WI 53223 • Phone 414-353-7060 • Fax 414-353-7069
Toll Free 800-558-5592 • E-Mail: Perlick@Perlick.com • www.Perlick.com

Form No. 091205
Rev. 08.31.10

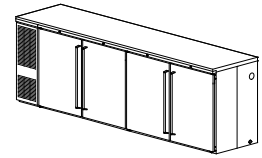
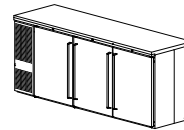
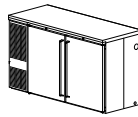
Sizes and Specifications Custom Self-Contained Cabinets

Job _____

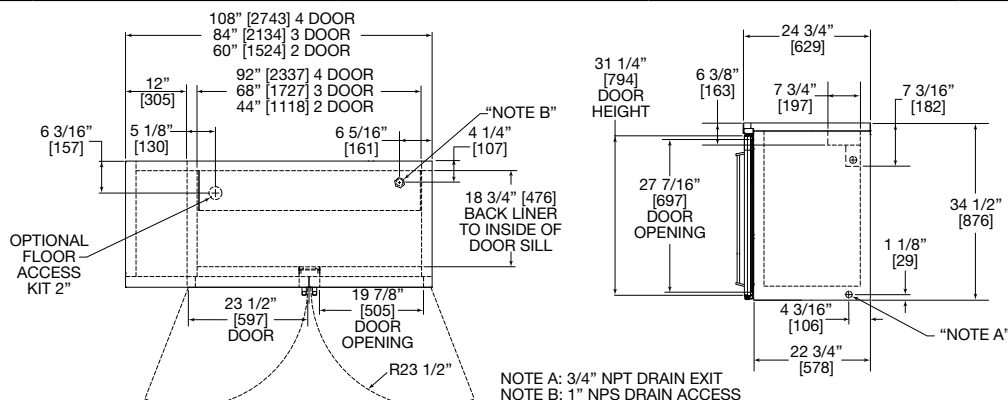
Area _____

Item No. _____

Model No. _____



| MODEL NOS. | BS60 | BS84 | BS108 |
|--|--|---------------|---------------|
| NUMBER OF DOORS | 2 Door | 3 Door | 4 Door |
| CABINET DIMENSIONS | Length - Inches (mm) | 60" (1524) | 84" (2134) |
| | Depth - Inches (mm) | 24 3/4" (629) | 24 3/4" (629) |
| | Height - Inches (mm) | 34 1/2" (876) | 34 1/2" (876) |
| CASE CAPACITY (based on 12 oz. Long Neck bottle) | 15 | 24 | 32 |
| CONDENSING UNIT H.P. | 1/4 | 1/3 | 1/3 |
| RUNNING LOAD -AMPS | 6.3 | 8.1 | 8.3 |
| Ship Wt. Lbs. (kg.) | 380 (172) | 490 (222) | 630 (286) |
| INTERIOR | Door sill: High strength polyethylene. Door pan and ceiling: High strength polystyrene. Floor pan and Walls: Stainless steel. Includes pilasters, (2) vinyl coated shelves and floor rack per door, and interior lights. | | |
| EXTERIOR | Front, back, top and sides stainless steel. Bottom galvanized steel. See optional accessories for door and grille finishes. | | |
| DOOR HINGING | Stainless steel hinges with standard location as illustrated. For special hinging specify hinge locations starting from left to right. Field reversible. | | |
| DOOR HARDWARE | Door handles: Choice of full length stainless steel, classic 6" black vinyl wrapped pull or top mounted stainless steel pull tab. Lock finish: chrome. | | |
| REFRIGERATION | R-134a capillary tube-type. Aluminum fin and copper tube evaporator, epoxy coated coil. Adjustable temperature control. Self-defrosting. Pull out condensing unit for service and cleaning. Compressor left or right. | | |
| ELECTRICAL | 115V, 60Hz., 1 phase AC. Furnished with 3-prong, 6 foot NEMA5-15 PC cord. Contact Perlick for other voltage/frequency requirements. | | |
| PLUMBING | Evaporator condensate is removed automatically. Optional floor drain with 3/4" NPT at right end or 1" NPS out bottom come plugged from factory. | | |
| INSULATION | Foamed-in-place polyurethane, 2" walls, 1 1/2" top. | | |
| OPTIONAL ACCESSORIES & MODIFICATIONS | <div style="display: flex; justify-content: space-between;"> <div> <ul style="list-style-type: none"> • Leg set • Beer dispensing tapping kit** • Laminated top • Laminated ends • Compressor right • Brass hardware (classic & full length only) • Caster sets • Base plates • Floor access kit </div> <div> Door finishes Black vinyl coated Stainless steel Customer choice of laminate Prepared for field lamination Glass door with black vinyl coated frame Glass door with stainless steel frame Glass door with laminated frame </div> <div> Grille finishes Black vinyl coated Stainless steel Customer choice of laminate </div> </div> | | |



8300 West Good Hope Road • Milwaukee, WI 53223 • Phone 414-353-7060 • Fax 414-353-7069
Toll Free 800-558-5592 • E-Mail: Perlick@Perlick.com • www.Perlick.com

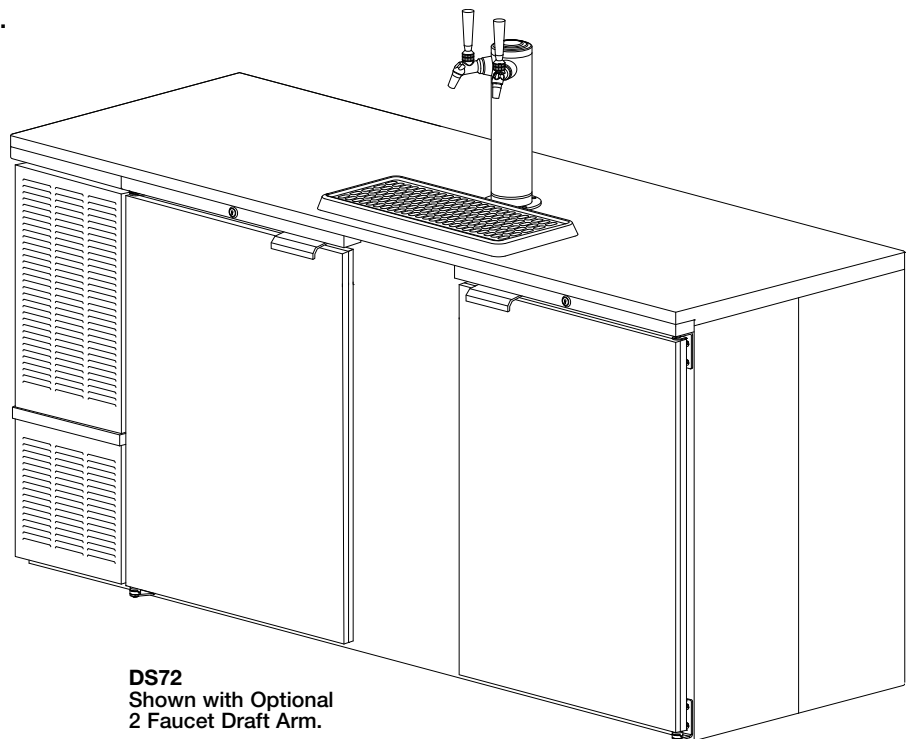
Perlick is committed to continuous improvement. Therefore, we reserve the right to change specifications without prior notice. Form No. 091205 Rev. 08.31.10

SELF-CONTAINED DIRECT DRAW DISPENSERS

Perlick Features

- Available in 2, 3 and 4 keg models.
- Front vented compressor.
- Two inch foamed-in-place insulation provides greater energy efficiency and structural strength.
- Quiet, high efficiency refrigeration system.
- Self-closing field reversible doors with locks.
- Heavy-duty polyethylene door sill.
- Stainless steel exterior.
- Heavy-duty stainless steel hinges.
- Heavy-duty reinforced base will not bend or sag.
- Epoxy coated evaporator coil.

MODEL NOS.

☐ DS60☐ DS72☐ DS84

DS72
Shown with Optional
2 Faucet Draft Arm.



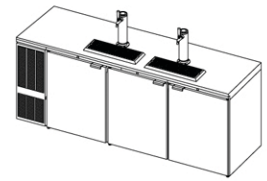
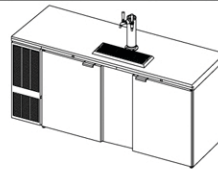
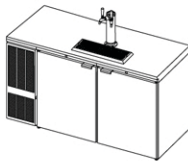
8300 West Good Hope Road • Milwaukee, WI 53223 • Phone 414-353-7060 • Fax 414-353-7069
Toll Free 800-558-5592 • E-Mail: Perlick@Perlick.com • www.Perlick.com

Form No. 090905
Rev. 05.25.10

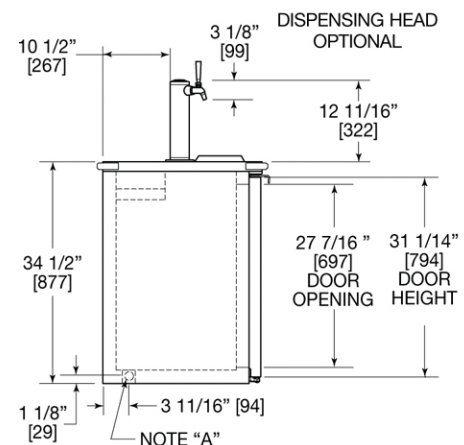
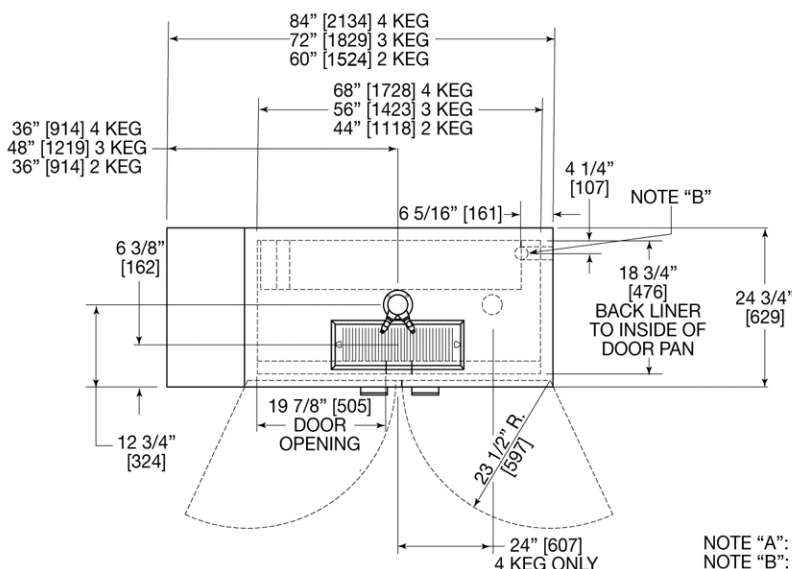
Sizes and Specifications

Self-Contained Direct Draw Dispensers

Job _____
 Area _____
 Item No. _____
 Model No. _____



| | | MODEL NOS. | | |
|----------------------|---|-----------------|---------------|---------------|
| DOOR FINISH | Black | DS60B | DS72B | DS84B |
| | Stainless Steel | DS60S | DS72S | DS84S |
| CABINET DIMENSIONS | Length - Inches (mm) | 60" (1524) | 72" (1829) | 84" (2134) |
| | Depth - Inches (mm) | 24 3/4" (629) | 24 3/4" (629) | 24 3/4" (629) |
| | Height - Inches (mm) | 34 1/2" (876) | 34 1/2" (876) | 34 1/2" (876) |
| NUMBER OF DOORS | | 2 | 2 | 3 |
| KEG CAPACITY | | 2 Keg | 3 Keg | 4 Keg |
| DISPENSING HEAD | | Customer Choice | | |
| CONDENSER UNIT H.P. | | 1/4 | 1/3 | 1/3 |
| RUNNING LOAD - AMPS | | 5.9 | 7.5 | 7.5 |
| SHIP WT Lbs. (kg) | | 385 (175) | 425 (193) | 500 (227) |
| INTERIOR | Door sill: High strength polyethylene. Door pan and ceiling: High strength polystyrene. Floor pan: Stainless steel. Walls: Galvanized steel. | | | |
| EXTERIOR | All Models: The top is 20 gauge stainless steel. The back, front and sides are stainless steel. Bottom is 18 gauge galvanized steel. Black Models: Doors and grilles are black vinyl coated steel. Stainless Models: Doors and grilles are stainless steel. | | | |
| REFRIGERATION | R-134a capillary tube-type. Aluminum fin and copper tube evaporator, epoxy coated coil. Forced air into dispensing head. Adjustable temperature control. Self-defrosting. Pull-out condensing unit for service and cleaning. | | | |
| VENTILATION | Front vented. | | | |
| ELECTRICAL | 115 Volt, 60 Hz., 1 Phase AC. Furnished with three prong, six foot NEMA5-15P cord. Contact Perlick for other voltage/frequency requirements. | | | |
| PLUMBING | 3/4" NPT drain exits out right end or 1" NPS out bottom. Evaporator condensate has been plumbed to a condensate pan located in the compressor housing. | | | |
| INSULATION | Foamed-in-place polyurethane; 2" walls, 1 1/2" top and floor. | | | |
| OPTIONAL ACCESSORIES | <ul style="list-style-type: none"> • Optional dispensing heads • Leg sets • Keg couplers • Caster sets • Shelf kit • Faucet locks | | | |



NOTE "A": 3/4" NPT DRAIN EXIT
 NOTE "B": 1" NPS DRAIN ACCESS



8300 West Good Hope Road • Milwaukee, WI 53223 • Phone 414-353-7060 • Fax 414-353-7069
 Toll Free 800-558-5592 • E-Mail: Perlick@Perlick.com • www.Perlick.com

Perlick is committed to continuous improvement. Therefore, we reserve the right to change specifications without prior notice. Form No. 090905
 Rev. 05.25.10



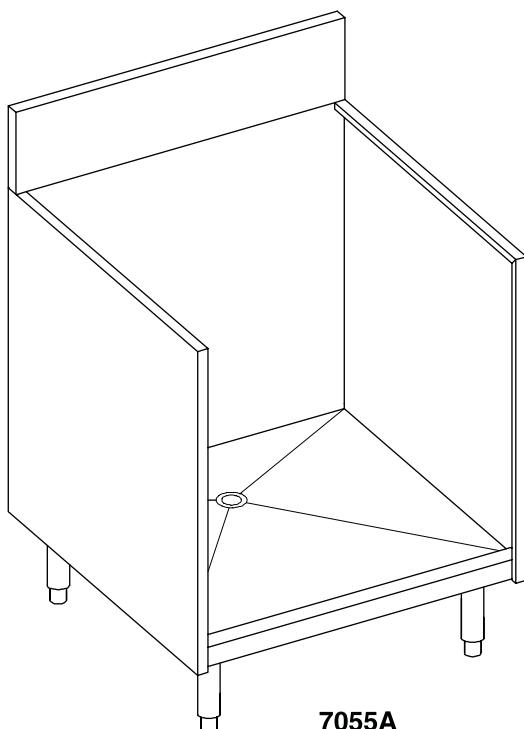
STORAGE BINS FOR GLASSWARE

Perlick Features

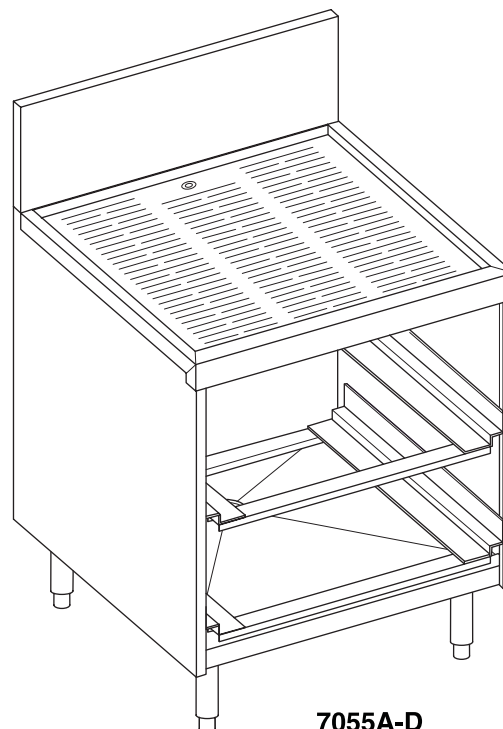
- Embossed stainless steel drainboard.
- Quality construction.

MODEL NOS.

- ☐ 7055A
- ☐ 7055A-D



7055A



7055A-D



8300 West Good Hope Road • Milwaukee, WI 53223 • Phone 414-353-7060 • Fax 414-353-7069
Toll Free 800-558-5592 • E-Mail: Perlick@Perlick.com • www.Perlick.com

Form No. SB01
Rev. 05.12.07



Sizes and Specifications Storage Bins for Glassware

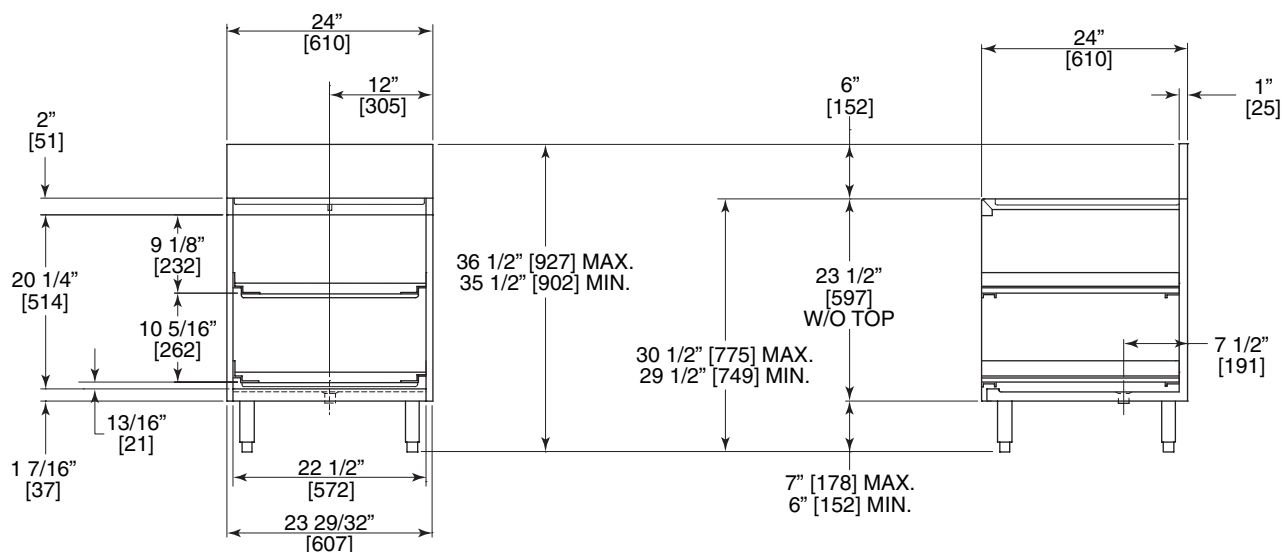
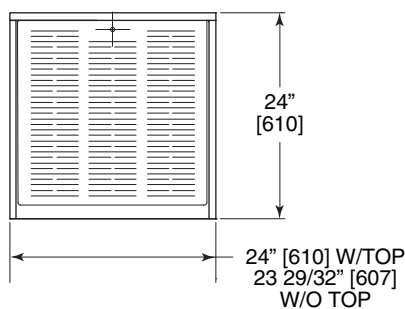
Job _____

Area _____

Item No. _____

Model No. _____

| MODEL NOS. | 7055A (NSF listed) | 7055A-D |
|-------------------|---|------------|
| LENGTH INS. (mm) | 24 (610) | 24 " (610) |
| SHIP WT lbs. (kg) | 50 (23) | 65 (30) |
| GENERAL PARTS | Stainless steel. | |
| BACKSPLASH | General: Stainless steel 6" high (4" high optional) with 1" return at top, mechanically fastened and sealed with steel support brackets. | |
| DRAINBOARD | Model No. 7055A-D: Embossed stainless steel, 21 ⁷ / ₁₆ " deep front to back. All horizontal and vertical edges 1/4" radius with balled corners. Underside reinforced with welded brackets. | |
| LEGS | 1 ⁵ / ₈ " tubular, stainless steel with 1" adjustable stainless steel foot. | |
| PLUMBING | Bin drain-connection - 1 NPS Male. Drainboard: Drain fitting at rear furnished with 1/2" I.D. flexible hose to drain water at bottom. | |



8300 West Good Hope Road • Milwaukee, WI 53223 • Phone 414-353-7060 • Fax 414-353-7069
Toll Free 800-558-5592 • E-Mail: Perlick@Perlick.com • www.Perlick.com

Perlick is committed to continuous improvement.
Therefore, we reserve the right to change specifications without prior notice.

Form No. SB01
Rev. 05.12.07

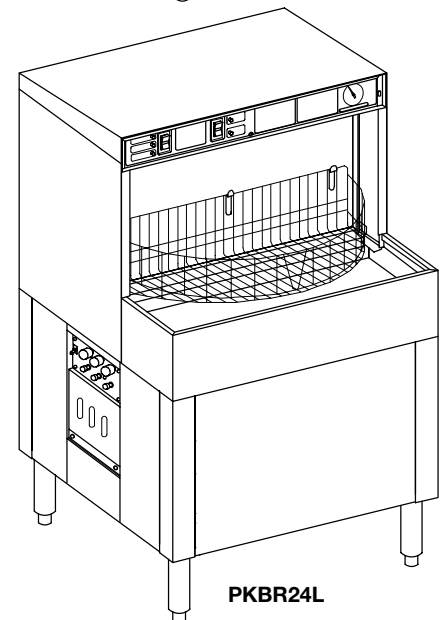
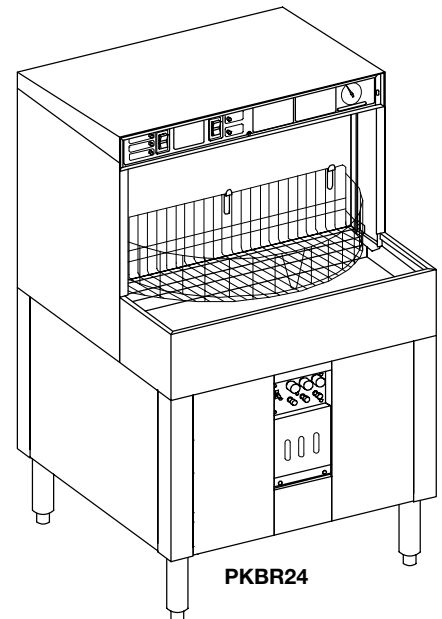
GLASSWASHERS

Perlick Features

- All stainless steel construction.
- Easy to clean and maintain.
- Convenient top-mounted instrument panel is easy to see and use.
- Upper and lower wash arms with fan-spray nozzles clean glasses inside and out.
- Fill and dump cycle provides clean water for each wash cycle.
- Wash tank heater maintains water temperature between cycles.
- Pitched, vinyl-coated glass racks help drain excess water off glassware and are removable for more efficient glass handling.
- Metal divider separates the load and wash areas eliminating the need for curtains.
- Divider safety switch stops wash cycle when divider is rotated.
- Peristaltic metering pumps with hand adjusted controls dispense detergent, sanitizer, and rinse aid.
- Illuminated sight glasses permit visual inspection of chemical flows during the wash cycle.

MODEL NOS.

- ☐ PKBR24
- ☐ PKBR24L
- ☐ PKBR24R



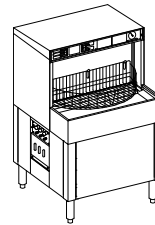
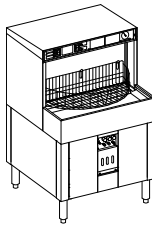
8300 West Good Hope Road • Milwaukee, WI 53223 • Phone 414-353-7060 • Fax 414-353-7069
Toll Free 800-558-5592 • E-Mail: Perlick@Perlick.com • www.Perlick.com

Form No. 021497
Rev. 05.30.10

Sizes and Specifications

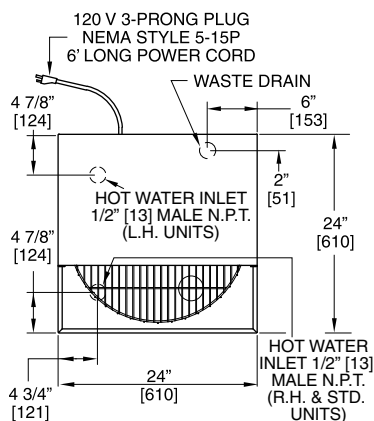
PKBR24 Glasswashers

Job _____
 Area _____
 Item No. _____
 Model No. _____

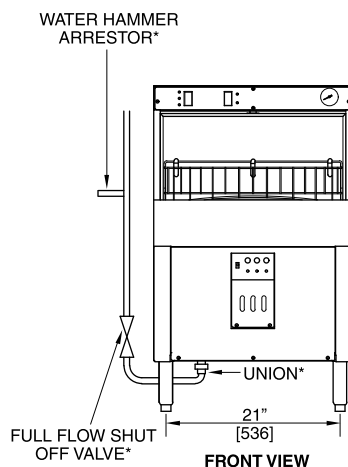


| MODEL NOS. | | PKBR24 | PKBR24L | PKBR24R |
|--------------------------------------|--|---------------------------------|---------------------------------|---------------------------------|
| CABINET DIMENSIONS | Length - Inches (mm) | 24" (610) | 24" (610) | 24" (610) |
| | Depth - Inches (mm) | 24" (610) | 24" (610) | 24" (610) |
| | Height - Inches (mm) | 39 1/4" (1001) / 40 1/4" (1026) | 39 1/4" (1001) / 40 1/4" (1026) | 39 1/4" (1001) / 40 1/4" (1026) |
| WASH TANK CAPACITY (gallons.) | | 1 | 1 | 1 |
| CYCLE TIME (seconds) | | 120 | 120 | 120 |
| WASH TIME (seconds) | | 60 | 60 | 60 |
| SANITIZER TIME (seconds) | | 35 | 35 | 35 |
| GLASSES WASHED PER HR. (2 1/4" Dia.) | | 720 | 720 | 720 |
| TANK HEATER (watts) | | 650 | 650 | 650 |
| WASH PUMP CAPACITY (gals./min.) | | 24 | 24 | 24 |
| DRAIN FLOW (gals./min.) | | 1.67 | 1.67 | 1.67 |
| EXHAUST REQUIREMENTS | | None | None | None |
| MAXIMUM GLASS HEIGHT | | 10" | 10" | 10" |
| SHIP WT lbs. (kg) | | 225 (103) | 225 (103) | 225 (103) |
| ELECTRICAL | 120 Volt, 60 Hz., single phase AC. 5.4 amps, furnished with 6 foot power cord and standard 3 prong NEMA style 5-15P. | | | |
| PLUMBING | Hot Water Inlet Connection: 1/2" NPTM. Incoming Hot Water: 130-140° F, at 30-60 psi with a flow rate of 4.0 gal/min. Drain: 1 1/4 IPS PVC socket connection to include an air gap. Plumbers Hookup Kit: Includes water hammer arrestor, stop valve and union. Important: Failure to install the Glasswasher with Plumbers Hookup Kit can damage the hot water solenoid valve. Machine failure due to improper installation is not covered by Perlick's warranty. | | | |
| WATER HARNESS | Water containing more than 15 GPG will require a water softener. Caution: Parts failure caused by hard water are not covered under Perlick's warranty. | | | |
| DETERGENT, SANITIZER and RINSE AID | Detergent: A heavy-duty liquid warewashing detergent containing water conditioners. Chlorine Sanitizer: Any EPA registered chlorine can be used. The EPA marking can be found on the container label. Rinse Aid: A low-foaming warewashing rinse aid containing water conditioners. Note: To ensure maximum glasswasher performance. It is important to select the appropriate detergent and rinse aid for specific water conditions. These chemicals can be purchased from a local chemical supplier or food service distributor. | | | |
| OPTIONAL ACCESSORIES | <ul style="list-style-type: none"> • Low sanitizer shut down kit - #61945 • Glass rack - #50470-2 | | | |

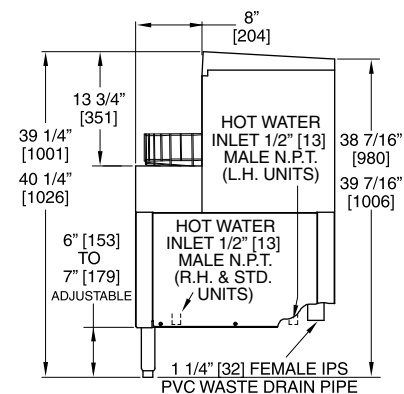
All plumbing and chemical lines must be routed so that the glasswasher can be pulled out for service.



TOP VIEW
 * PARTS INCLUDED IN PLUMBER'S HOOKUP KIT



FRONT VIEW



RIGHT END VIEW



8300 West Good Hope Road • Milwaukee, WI 53223 • Phone 414-353-7060 • Fax 414-353-7069
 Toll Free 800-558-5592 • E-Mail: Perlick@Perlick.com • www.Perlick.com

Perlick is committed to continuous improvement.
 Therefore, we reserve the right to change specifications without prior notice.

Form No. 021497
 Rev. 05.30.10

GLASS AND CHEMICAL STORAGE CABINETS

CABINETS WITH RECESSED OR FLAT TOP



MODELS

- ☐ 7057-2
- ☐ 7057-4



Perlick Features

- Free-standing station can be used wherever efficient glass handling or chemical storage is needed.



GENERATIONS OF
EXCELLENCE

Form No. SB07



8300 West Good Hope Road • Milwaukee, WI 53223 • Phone 414.353.7060 • Fax 414.353.7069
Toll Free 800.558.5592 • E-Mail perlick@perlick.com • www.perlick.com

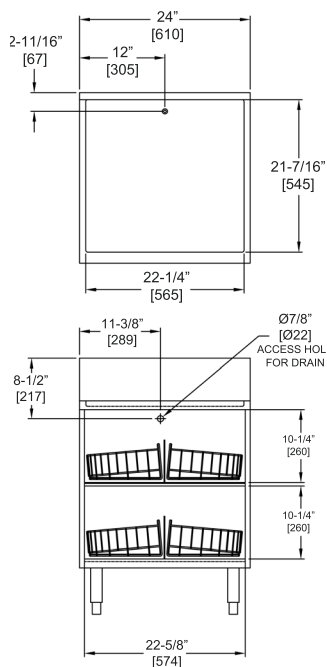
Size and Specifications

Cabinets with Recessed or Flat top

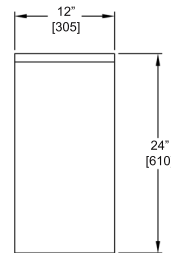
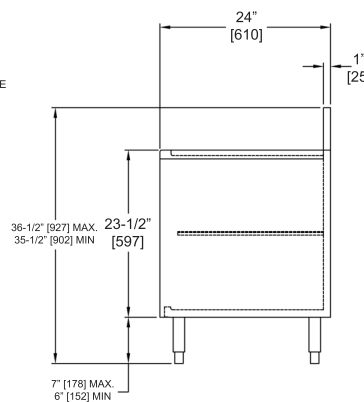


Job _____
 Area _____
 Item No. _____
 Model No. _____

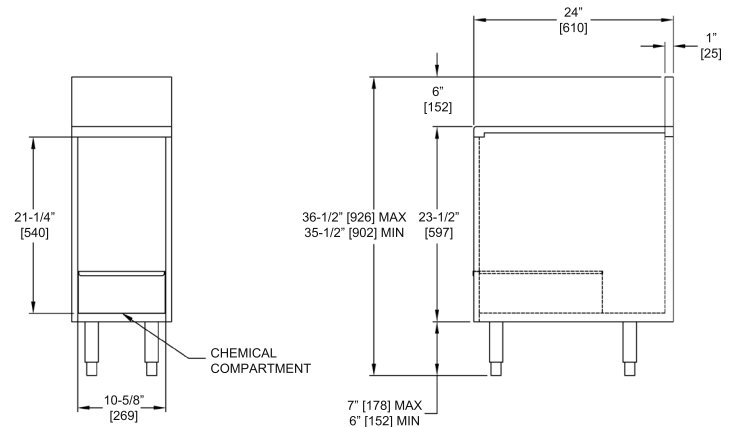
| MODEL NOS. | 7057-2 | 7057-4 |
|----------------------|---|--|
| LENGTH IN. (mm) | 24" (610) | 12" (305) |
| DEPTH IN. (mm) | 24" (610) | 24" (610) |
| HEIGHT IN. (mm) | 36-1/2" (926) max.–35-1/2" (901) min. | 36-1/2" (926) max.–35-1/2" (901) min. |
| SHIP WT. lbs. (kg) | 86 (40) | 55 (25) |
| EXTERIOR | All exterior parts are made from stainless steel | |
| BACKSPLASH | Stainless steel 6" with 1" return at top, mechanically fastened and sealed with steel support brackets | |
| TOP | All horizontal and vertical edges 1/4" radius with balled corners. Underside reinforced with welded brackets. | |
| LEGS | 1-5/8" tubular, stainless steel with 1" adjustable stainless steel foot | |
| PLUMBING | Recessed Top Panel: Drain fitting at rear for 1/2" I.D. flexible hose | N/A |
| CHEMICAL COMPARTMENT | N/A | Removable stainless steel chemical pan |
| OPTIONAL ACCESSORIES | Glass racks (Part No. 50470-2) | N/A |



7057-2



7057-4



Form No. SB07



8300 West Good Hope Road • Milwaukee, WI 53223 • Phone 414.353.7060 • Fax 414.353.7069
 Toll Free 800.558.5592 • E-Mail perlick@perlick.com • www.perlick.com

Perlick is committed to continuous improvement. Therefore, we reserve the right to change specifications without prior notice

DRAINBOARDS

TS and TSD SERIES



Perlick Features

- Embossed stainless steel drainboard
- Screw-in legs for fast installation
- Stainless steel legs install without tools and have "Rust Free" Thermoplastic feet

MODELS

TS Series

- ☐ TS12*
- ☐ TS18*
- ☐ TS24
- ☐ TS30
- ☐ TS36
- ☐ TS42
- ☐ TS48

MODELS

TSD Series

- ☐ TSD12*
- ☐ TSD18*
- ☐ TSD24
- ☐ TSD30
- ☐ TSD36
- ☐ TSD42
- ☐ TSD48

** Available in 1" increments from 13" to 23"*



TS24



TSD24



GENERATIONS OF
EXCELLENCE

Form No.DB01
Rev. 01.16.2012



8300 West Good Hope Road • Milwaukee, WI 53223 • Phone 414.353.7060 • Fax 414.353.7069
Toll Free 800.558.5592 • E-Mail perlick@perlick.com • www.perlick.com

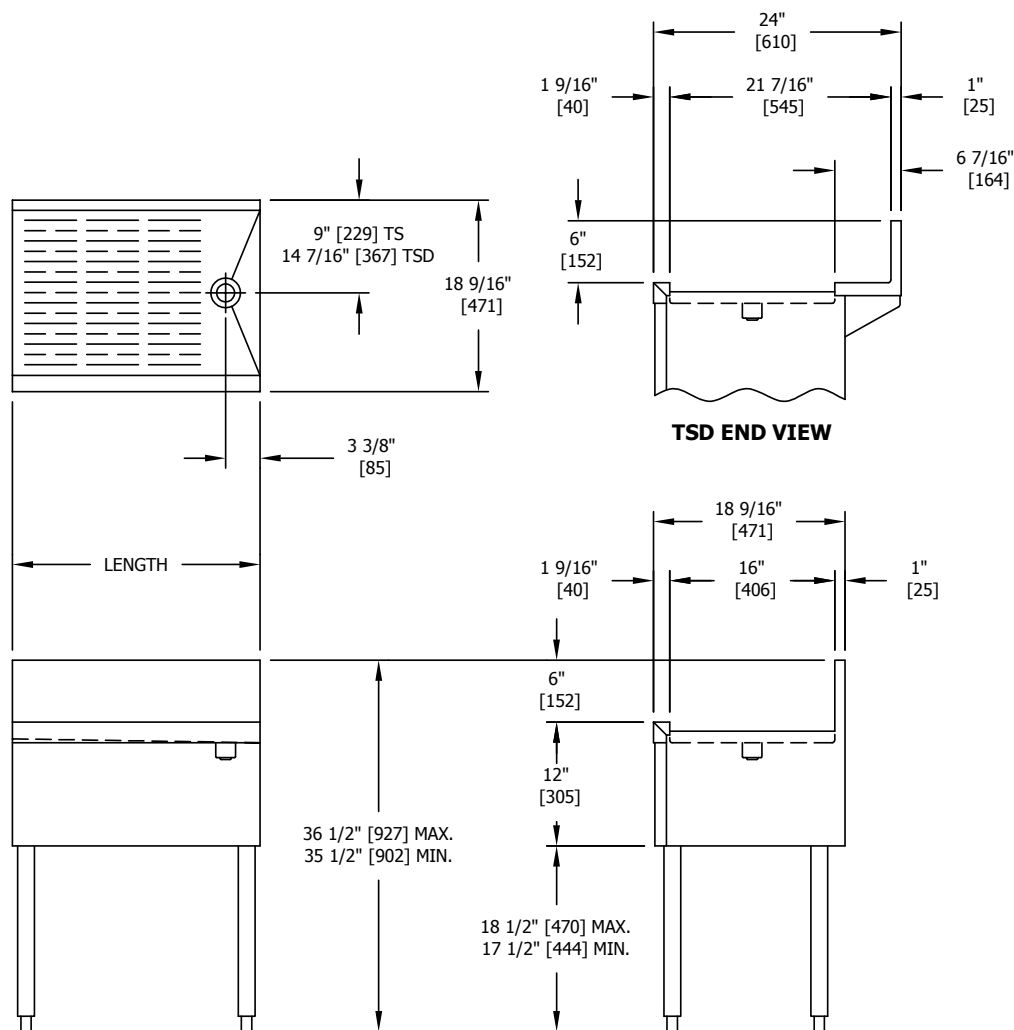
Size and Specifications

Drainboards - TS and TSD Series



Job _____
 Area _____
 Item No. _____
 Model No. _____

| MODEL NOS. | TS(D)12 | TS(D)18 | TS(D)24 | TS(D)30 | TS(D)36 | TS(D)42 | TS(D)48 |
|--------------------|--|-----------|-----------|-----------|-----------|------------|------------|
| LENGTH IN. (mm) | 12" (305) | 18" (457) | 24" (610) | 30" (914) | 36" (914) | 42" (1067) | 48" (1219) |
| SHIP WT. lbs. (kg) | 35 (16) | 40 (18) | 45 (20) | 50 (23) | 60 (27) | 90 (41) | 115 (52) |
| FRONT & SIDES | Stainless steel | | | | | | |
| BACKSPLASH | General and TS Series: Stainless steel 6" high (4" optional) with 1" return at top, mechanically fastened and sealed to top with steel support brackets TSD Series: Stainless steel rear deck | | | | | | |
| BACK | Galvanized steel | | | | | | |
| DRAINBOARD | Embossed stainless steel, 16" deep front to back. All horizontal and vertical edges 1/4" radius with ballbed corners. Underside reinforced with welded brackets. Stainless steel drain socket. | | | | | | |
| LEGS | 1-5/8" tubular, stainless steel with 1" adjustable thermoplastic foot | | | | | | |
| PLUMBING | Drain connection- 1-1/2" NPS male | | | | | | |



Form No. DB01
 Rev. 01.16.2012



8300 West Good Hope Road • Milwaukee, WI 53223 • Phone 414.353.7060 • Fax 414.353.7069
 Toll Free 800.558.5592 • E-Mail perlick@perlick.com • www.perlick.com

Perlick is committed to continuous improvement. Therefore, we reserve the right to change specifications without prior notice

ONE TANK SINKS – STAINLESS STEEL BOWL



MODELS

TS Series

□ TS12HSN



Perlick Features

- Deep drawn stainless steel bowl
- NSF listed, commercial grade hot/cold water faucet (must be ordered separately)
- 16 oz. pump soap dispenser
- Underside is sound-deadened
- Stainless steel legs install without tools and have "Rust Free" thermoplastic feet



GENERATIONS OF
EXCELLENCE

Form No. SK07
Rev. 09.19.2011



8300 West Good Hope Road • Milwaukee, WI 53223 • Phone 414.353.7060 • Fax 414.353.7069
Toll Free 800.558.5592 • E-Mail perlick@perlick.com • www.perlick.com

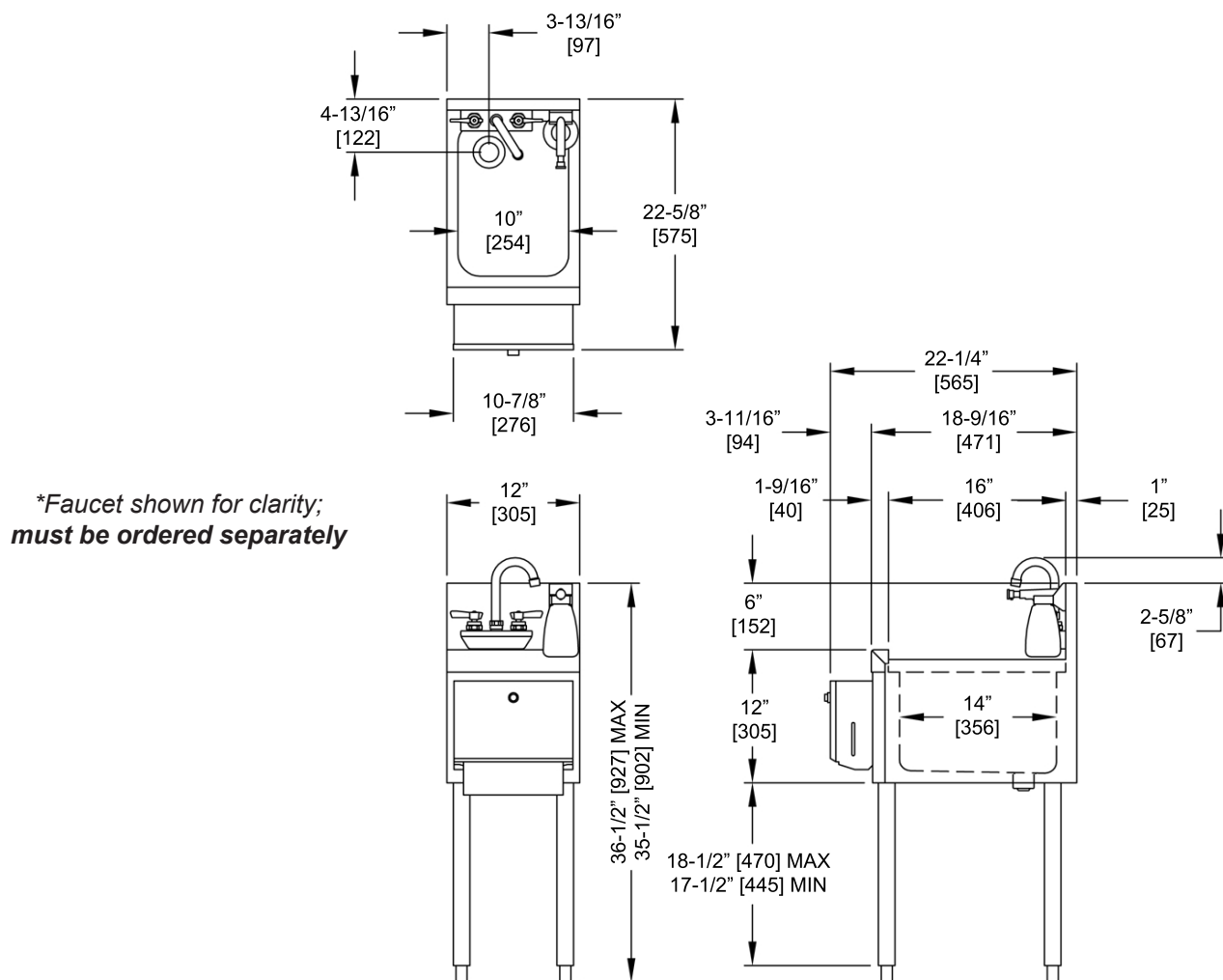
Size and Specifications

One Tank Sink – Stainless Steel Bowl



Job _____
 Area _____
 Item No. _____
 Model No. _____

| MODEL NO. | TS12HSN |
|----------------------|---|
| LENGTH IN. (mm) | 12" (305) |
| SHIP WEIGHT LB. (kg) | 50 (23) |
| TOP & SIDES | Stainless steel |
| BACK & BOTTOM | Stainless steel |
| BACKSPLASH | Stainless steel 6" high (4" high optional) with 1" return at the top, mechanically fastened and sealed to hand sink top with steel support brackets. |
| LEGS | 1-5/8" tubular, stainless steel with 1" adjustable thermoplastic foot. |
| BOWL | Stainless steel with sound deadening. 10"x14"x9-1/4" deep. All horizontal and vertical edges 1-1/2" radius with balled corners. Furnished with 1-1/2" stainless steel drain socket. 8-1/2" standpipe. |
| WATER FAUCET | Chrome plated, hot and cold, goose neck swing spout faucet. Heavy-duty all brass construction. Must be ordered separately. Lead free faucet also available. |
| PLUMBING | Drain connection: 1-1/2" NPS male. Hot and cold water connection |



Form No. SK07
 Rev. 09.19.2011



8300 West Good Hope Road • Milwaukee, WI 53223 • Phone 414.353.7060 • Fax 414.353.7069
 Toll Free 800.558.5592 • E-Mail perlick@perlick.com • www.perlick.com

Perlick is committed to continuous improvement. Therefore, we reserve the right to change specifications without prior notice

STANDARD ICE CHESTS WITHOUT COLD PLATE

**MODELS**

TS Series

☐ TS24IC☐ TS30IC☐ TS36IC☐ TS42IC☐ TS48IC**MODELS**

TSD Series

☐ TSD24IC☐ TSD30IC☐ TSD36IC☐ TSD42IC☐ TSD48IC**Perlick Features**

- Dent resistant ABS top ledge
- Stainless steel legs install without tools and have "Rust Free" thermoplastic feet

Form No. IC02
Rev. 01.17.20128300 West Good Hope Road • Milwaukee, WI 53223 • Phone 414.353.7060 • Fax 414.353.7069
Toll Free 800.558.5592 • E-Mail perlick@perlick.com • www.perlick.com

Size and Specifications

Standard Ice Chests without Cold Plate



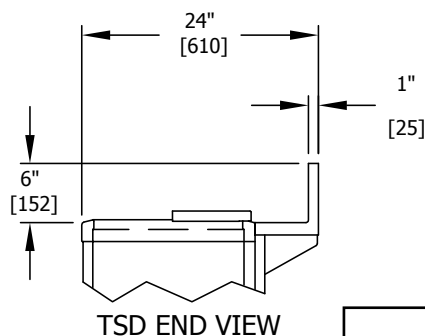
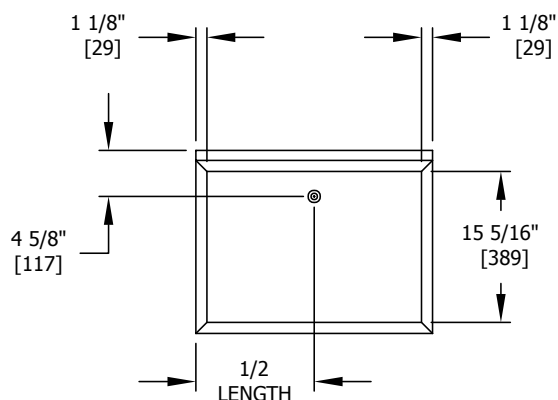
Job _____

Area _____

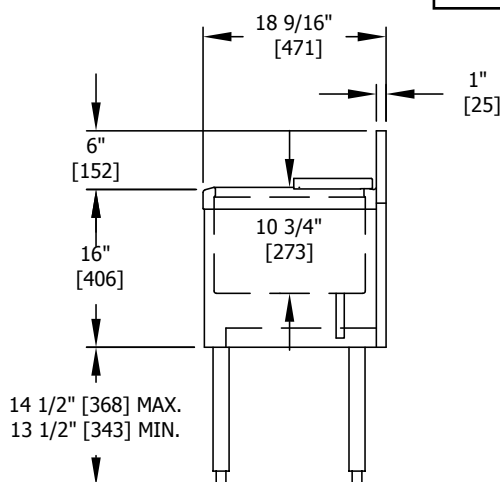
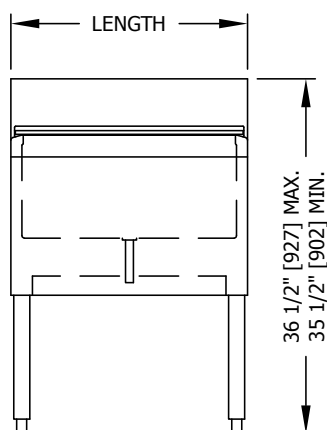
Item No. _____

Model No. _____

| MODEL NOS. | TS(D)18IC | TS(D)24IC | TS(D)30IC | TS(D)36IC | TS(D)42IC | TS(D)48IC |
|--------------------|---|-----------|-----------|-----------|------------|------------|
| LENGTH IN. (mm) | 18" (457) | 24" (610) | 30" (762) | 36" (914) | 42" (1067) | 48" (1219) |
| ICE CAP. lbs. (kg) | 35" (15.8) | 50 (22.7) | 70 (31.8) | 85 (38.6) | 100 (45.4) | 115 (52.2) |
| SHIP WT. lbs. (kg) | 50 (22.7) | 60 (27.2) | 70 (31.8) | 80 (36.3) | 90 (40.1) | 100 (45.4) |
| FRONT & SIDES | Stainless steel, top rim ABS | | | | | |
| BACKSPLASH | General and TS Series: Stainless steel 6" high (4" optional) with 1" return at top, mechanically fastened and sealed to ice chest top with steel support brackets TSD Series: Backlash and rear deck stainless steel | | | | | |
| BACK & BOTTOM | Galvanized steel | | | | | |
| COVERS | Stainless steel, two-piece, removable | | | | | |
| INTERIOR | Stainless steel with 1/4" radius corners, welded and sealer with non-exposed cold plate. Interiors can be divided with accessory freestanding ice dividers | | | | | |
| INSULATION | Foamed-in-place polyurethane | | | | | |
| LEGS (optional) | 1-5/8" tubular, stainless steel with 1" adjustable thermoplastic foot | | | | | |
| PLUMBING | Drain connection- 1/2" NPS male | | | | | |



Note: Covers not included.



Form No. IC02
Rev. 01.17.2012



8300 West Good Hope Road • Milwaukee, WI 53223 • Phone 414.353.7060 • Fax 414.353.7069
Toll Free 800.558.5592 • E-Mail perlick@perlick.com • www.perlick.com

Perlick is committed to continuous improvement. Therefore, we reserve the right to change specifications without prior notice

BOTTLE COOLERS


BC Series



Perlick Features

- Heavy-Duty construction
- 2" foamed-in-place insulation provides energy savings and durability
- Revolutionary insulation that has zero ozone depletion potential and zero global warming potential
- Stainless steel interior standard
- Stainless or black vinyl coated exteriors
- Plug-in installation; no condensate plumbing required
- Quiet running, high efficient, balanced refrigeration system
- 24" front to back dimension matches depth of underbar stainless steel
- Reinforced door mullion will not bend or sag
- Dent resistant heavy gauge doors; locks optional
- Standard models factory set to approximately 38°F; Low temp models set to approximately 30°F
- Bottle opener and cap receiver optional

MODELS

- ☐ BC24 SERIES
- ☐ BC24LT SERIES
- ☐ BC36 SERIES 
- ☐ BC36LT SERIES
- ☐ BC48 SERIES
- ☐ BC48LT SERIES
- ☐ BC60 SERIES
- ☐ BC60LT SERIES
- ☐ BC72 SERIES
- ☐ BC72LT SERIES
- ☐ BC96 SERIES
- ☐ BC96LT SERIES

† BC36 Model Only



BC24

(shown with optional opener, receiver and casters)



BC36

(shown with optional casters)



BC72

(shown with optional opener, receiver and casters)



GENERATIONS OF
EXCELLENCE

Form No. 130303
Rev. 02.09.2012



8300 West Good Hope Road • Milwaukee, WI 53223 • Phone 414.353.7060 • Fax 414.353.7069
Toll Free 800.558.5592 • E-Mail perlick@perlick.com • www.perlick.com

Size and Specifications

Bottle Coolers - BC Series

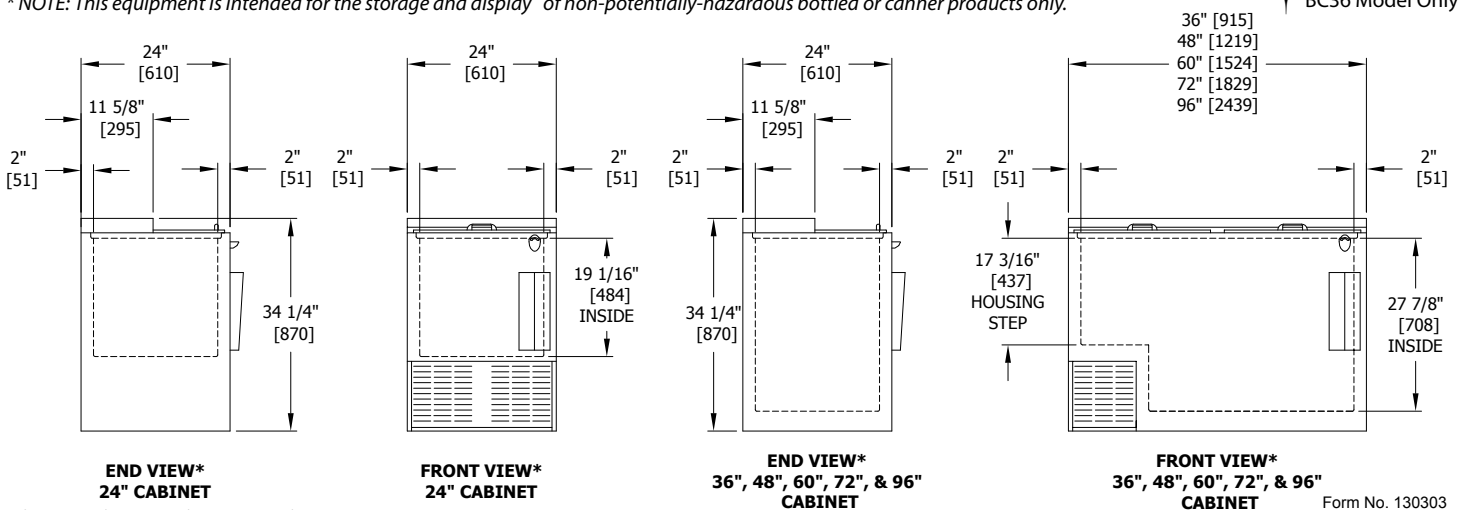


Job _____
 Area _____
 Item No. _____
 Model No. _____

| MODEL NO. | | BC24/ BC24LT | BC36/ BC36LT | BC48/ BC48LT | BC60/ BC60LT | BC72/ BC72LT | BC96/ BC96LT |
|--|--|-----------------|-----------------|-----------------|-----------------|-----------------|-----------------|
| CABINET DIMENSIONS | Length - Inches (mm) | 24" (610) | 36" (915) | 48" (1219) | 60" (1524) | 72" (1829) | 96" (2439) |
| | Depth - Inches (mm) | 24" (610) | 24" (610) | 24" (610) | 24" (610) | 24" (610) | 24" (610) |
| | Height - Inches (mm) | 34-1/4" (870) | 34-1/4" (870) | 34-1/4" (870) | 34-1/4" (870) | 34-1/4" (870) | 34-1/4" (870) |
| INTERIOR CUBIC FOOT (m ³) | | 4.0 (.11) | 7.6 (0.21) | 12.6 (0.36) | 16.5 (0.47) | 20.6 (0.58) | 28.7 (0.81) |
| CASE CAPACITY (based on 12 oz. long neck bottle) | | 5.5 | 9.75 | 17.2 | 21 | 28.3 | 41 |
| CASE CAPACITY (based on 12 oz. cans) | | 7 | 16 | 25 | 30 | 36 | 58 |
| CONDENSER UNIT H.P. | | 1/5 | 1/5 | 1/4 | 1/3 | 1/3 | 1/3 |
| RUNNING LOAD - AMPS | | 3.2 | 3.0 | 5.2 | 7.0 | 6.9 | 7.6 |
| SHIP WT. Lbs. (kg) | | 190 (86) | 245 (111) | 300 (136) | 353 (160) | 405 (184) | 515 (235) |
| INTERIOR | All models have stainless steel walls and floor | | | | | | |
| EXTERIOR | Choice of black, stainless steel and all stainless. All tops are stainless steel. Black Option: Front and ends are black vinyl coated steel, back and bottom are galvanized. Stainless Steel Option: Front and ends are stainless steel, back and bottom are galvanized. All Stainless Option: Front, ends, back and bottom are stainless steel. | | | | | | |
| TEMPERATURE | Factory set at approximately 38°F for Standard models, 30°F for Low-temp models | | | | | | |
| DOORS (SLIDING) | Stainless steel top and bottom pans. Die cast handle. Optional locks. | | | | | | |
| REFRIGERATION | R134a capillary tube/type with hermetic condensing unit. Pulls out for service and cleaning. Low-temp models have automatic defrost | | | | | | |
| ELECTRICAL | 115V, 60Hz., 1 Phase AC. Furnished with 6 foot NEMA 5-15P rubber plug-in cord (115V model only). Also available in 230V, 50Hz., 1 Phase AC. Carries CE marking conformity, applies to models BC24-230, BC36-230 & BC48-230. | | | | | | |
| PLUMBING | None required. Condensate evaporates automatically. | | | | | | |
| INSULATION | 2" Foamed-in-place polyurethane insulation | | | | | | |
| VENTILATION | BC24 model is front vented, all other models require 2" clearance from wall either on left end or back of cabinet for proper air flow. | | | | | | |
| OPTIONAL ACCESSORIES | <ul style="list-style-type: none"> Floor Racks Bin Dividers Interior light kit (installed) Casters Speed Rails Adjustable Legs Bottle opener and receiver Wine Temperature (specify red or white) Roller Basket Shelving Interior Light Door Locks | | | | | | |

*NOTE: This equipment is intended for the storage and display of non-potentially-hazardous bottled or canner products only.

† BC36 Model Only



Form No. 130303
Rev. 02.09.2012



8300 West Good Hope Road • Milwaukee, WI 53223 • Phone 414.353.7060 • Fax 414.353.7069
 Toll Free 800.558.5592 • E-Mail perlick@perlick.com • www.perlick.com

Perlick is committed to continuous improvement. Therefore, we reserve the right to change specifications without prior notice

18" BLENDER STATION WITH SINK

**MODELS**

TS Series

☐ TS18BLW**MODELS**

TSD Series

☐ TSD18BLW**Perlick Features**

- Deep drawn stainless steel bowl.
- NSF listed, commercial grade hot/cold water faucet (must be ordered separately).
- Underside is sound-deadened.
- Convenient front-mounted shelf with access hole for electrical cord.
- Stainless steel legs install without tools and have "Rust Free" Thermoplastic feet.



GENERATIONS OF
EXCELLENCE

Form No. BL03
Rev. 09.19.2011



8300 West Good Hope Road • Milwaukee, WI 53223 • Phone 414.353.7060 • Fax 414.353.7069
Toll Free 800.558.5592 • E-Mail perlick@perlick.com • www.perlick.com

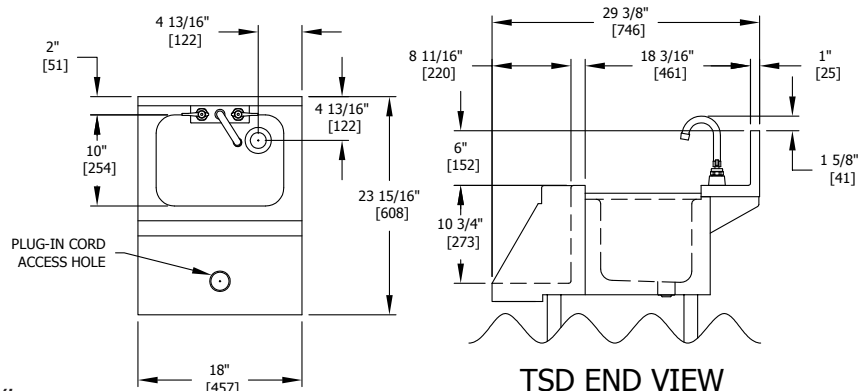
Size and Specifications

18" Blender Station with Sink

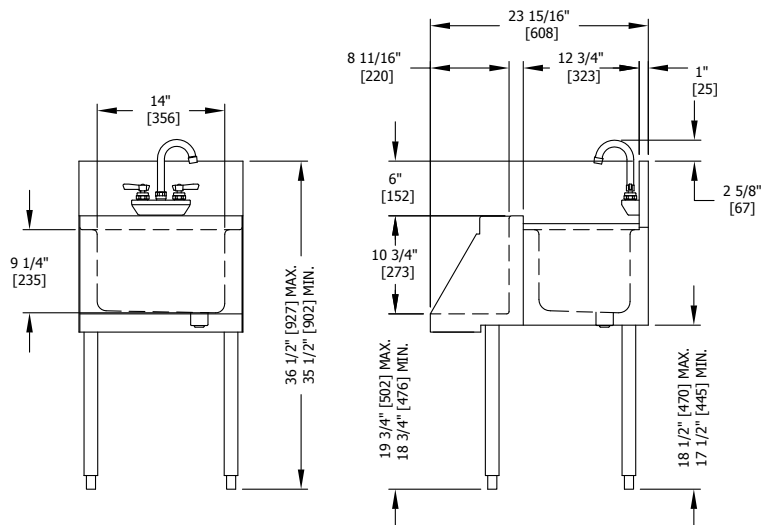


Job _____
 Area _____
 Item No. _____
 Model No. _____

| MODEL NOS. | TS(D)18BLW |
|--------------------|---|
| LENGTH IN. (mm) | 18" (457) |
| SHIP WT. lbs. (kg) | 60 (27) |
| TOP & SHELF | Stainless steel. Shelf includes access hole for plug-in cord |
| BACK & BOTTOM | Stainless steel |
| BACKSPLASH | Stainless steel 6" high (4" high optional) with 1" return at top, mechanically fastened and sealed with steel support brackets. TSD Series: Stainless steel rear deck. |
| LEGS | 1-5/8" tubular, stainless steel with 1" adjustable thermoplastic foot. |
| BOWL | Stainless steel with sound deadening. All horizontal and vertical edges 1-1/2" radius with balled corners. Furnished with 1-1/2" stainless steel drain socket and 8-1/2" stand pipe. 10" x 14" x 9-1/4" deep. |
| WATER FAUCET | Chrome plated, hot and cold, goose-neck faucet. Heavy-duty all brass construction. Must be ordered separately. Lead free faucet also available. |
| PLUMBING | Drain-connection- 1-1/2" NPS Male. Hot and cold water connection: TS Series: 3/8" O.D. copper supply tubes. TSD Series: 1/2" IPS shanks and nuts. |
| ELECTRIC | Duplex outlet included, but not installed. |



**Faucet shown for clarity;
 must be ordered separately*



Form No. BL03
 Rev. 09.19.2011



8300 West Good Hope Road • Milwaukee, WI 53223 • Phone 414.353.7060 • Fax 414.353.7069
 Toll Free 800.558.5592 • E-Mail perlick@perlick.com • www.perlick.com

Perlick is committed to continuous improvement. Therefore, we reserve the right to change specifications without prior notice